



Grizzly Peak, 4,091 sq ft

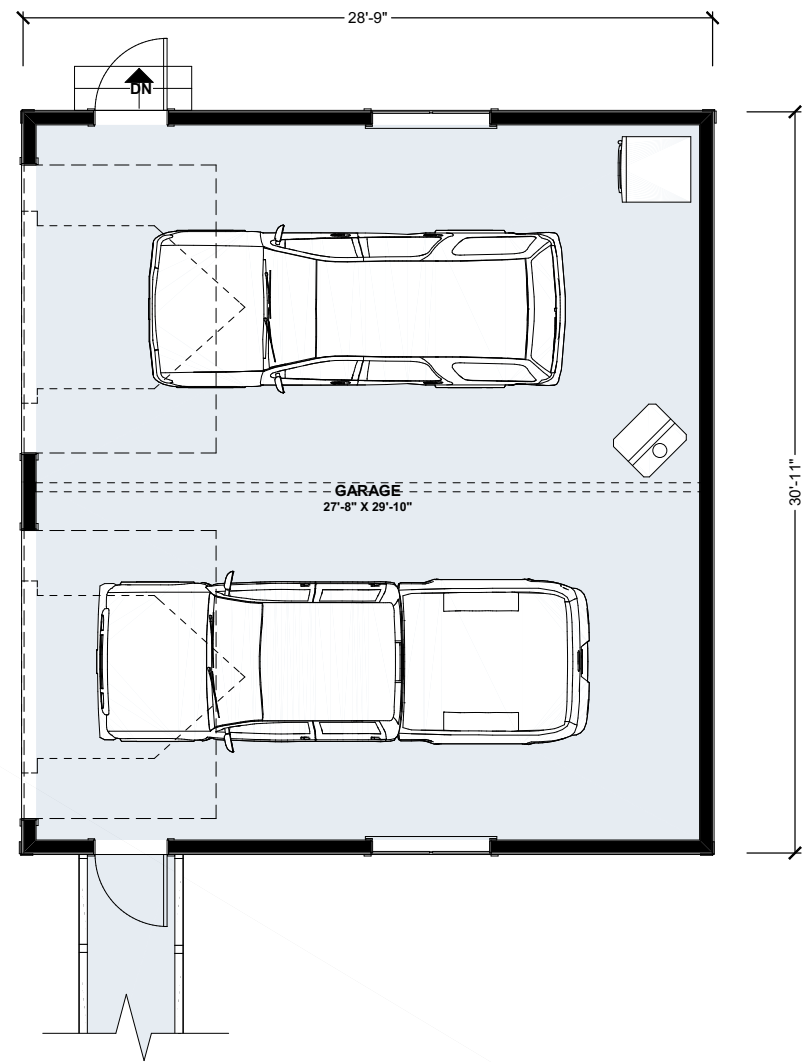
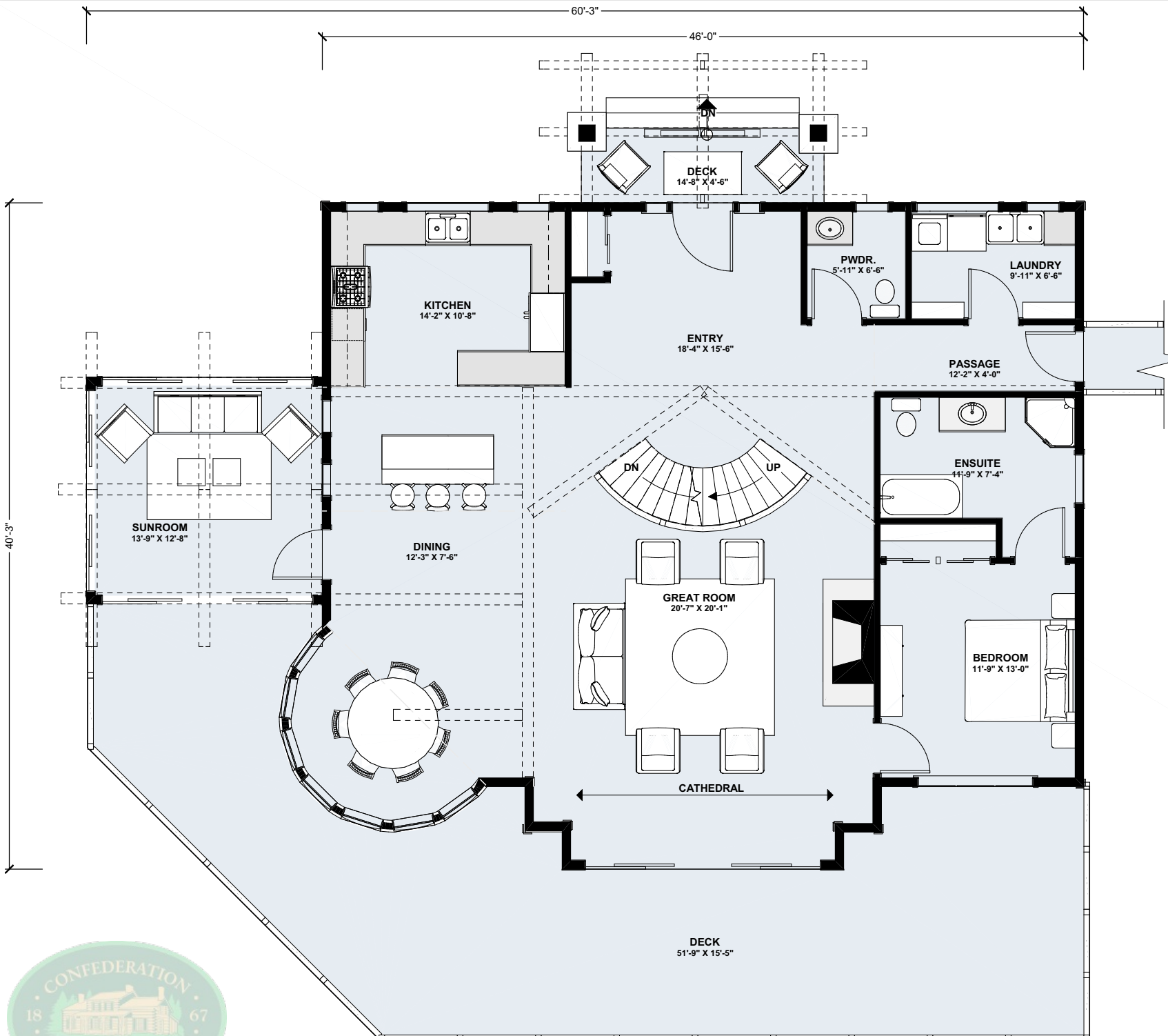




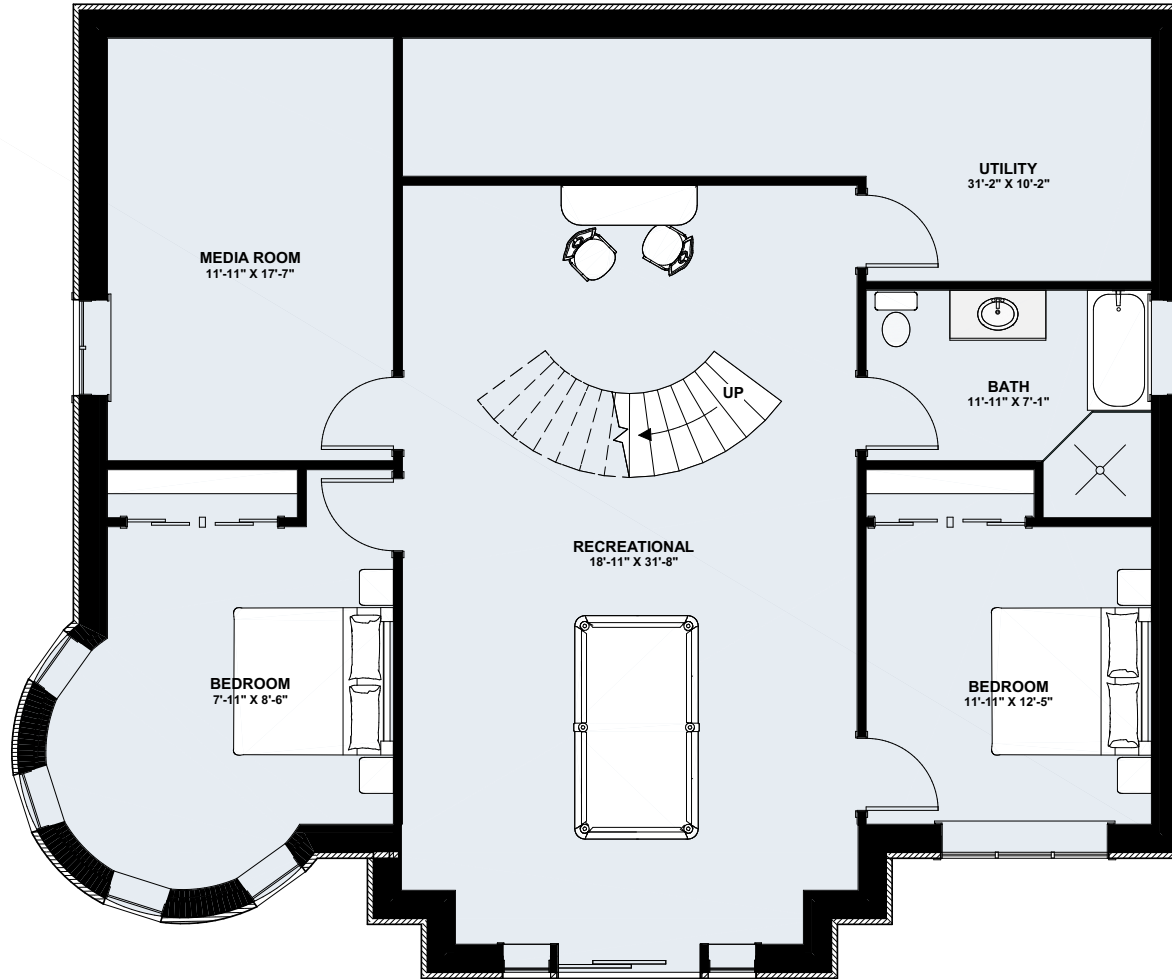




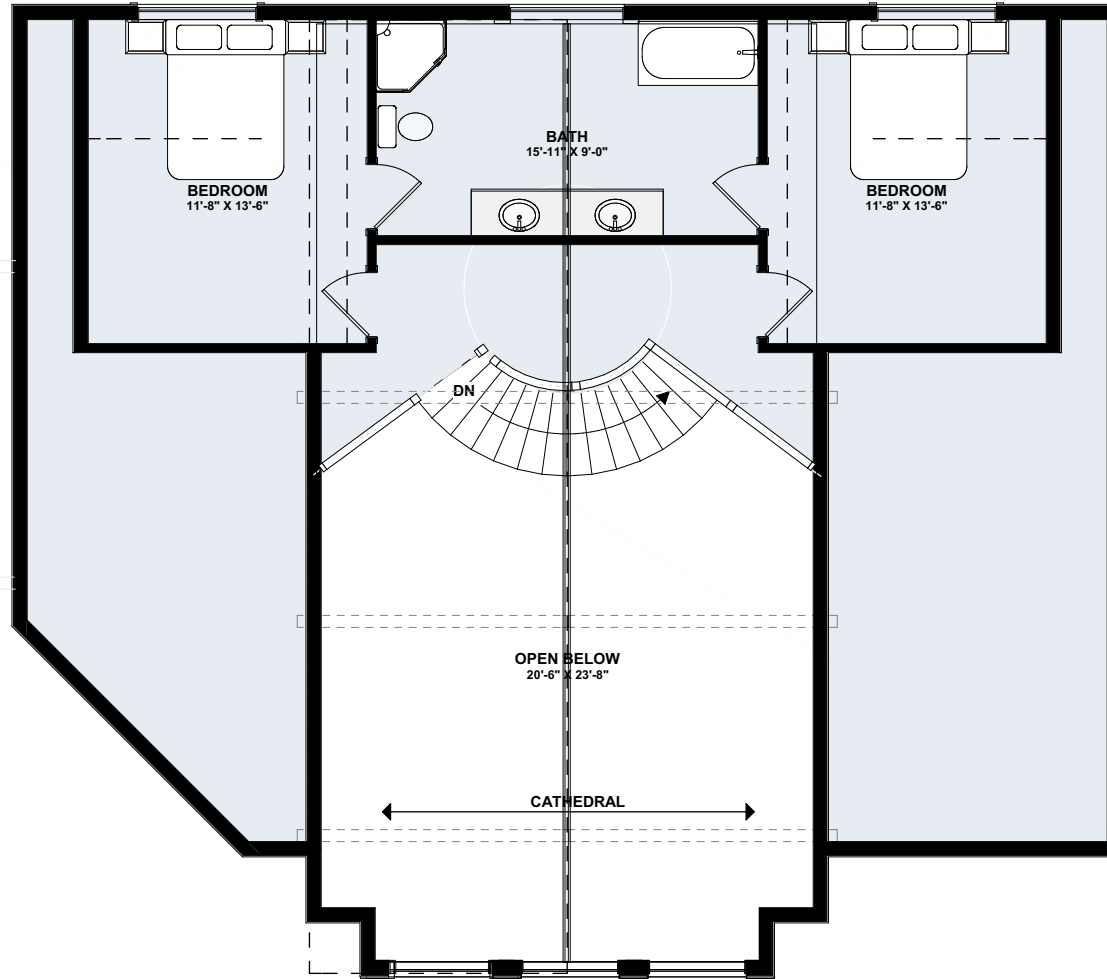




Main Floor Plan | 1716 sq ft



Lower Floor Plan | 1743 sq ft



Upper Floor Plan | 632 sq ft

LIKE THIS PLAN?

Try Our All-In Log Home Budget Calculator

Most calculators only estimate the shell. Ours gives you a realistic look at the total cost — land, design choices, building options, and more — so you can plan with confidence.

START NOW

Got questions? Call or email:

877-462-5647 | info@confederationloghomes.com

(We'll send your estimate to this email address)

(If you already own property and don't consider it part of your budget, enter 0)

(Builder erects shell and gets it weather tight, YOU act as general contractor - saves 15%.) This adds the look and feel of timber frame to your log home.

(Based on the sq ft of your main floor)