



Ayer's Cliff, 2,748 sq ft



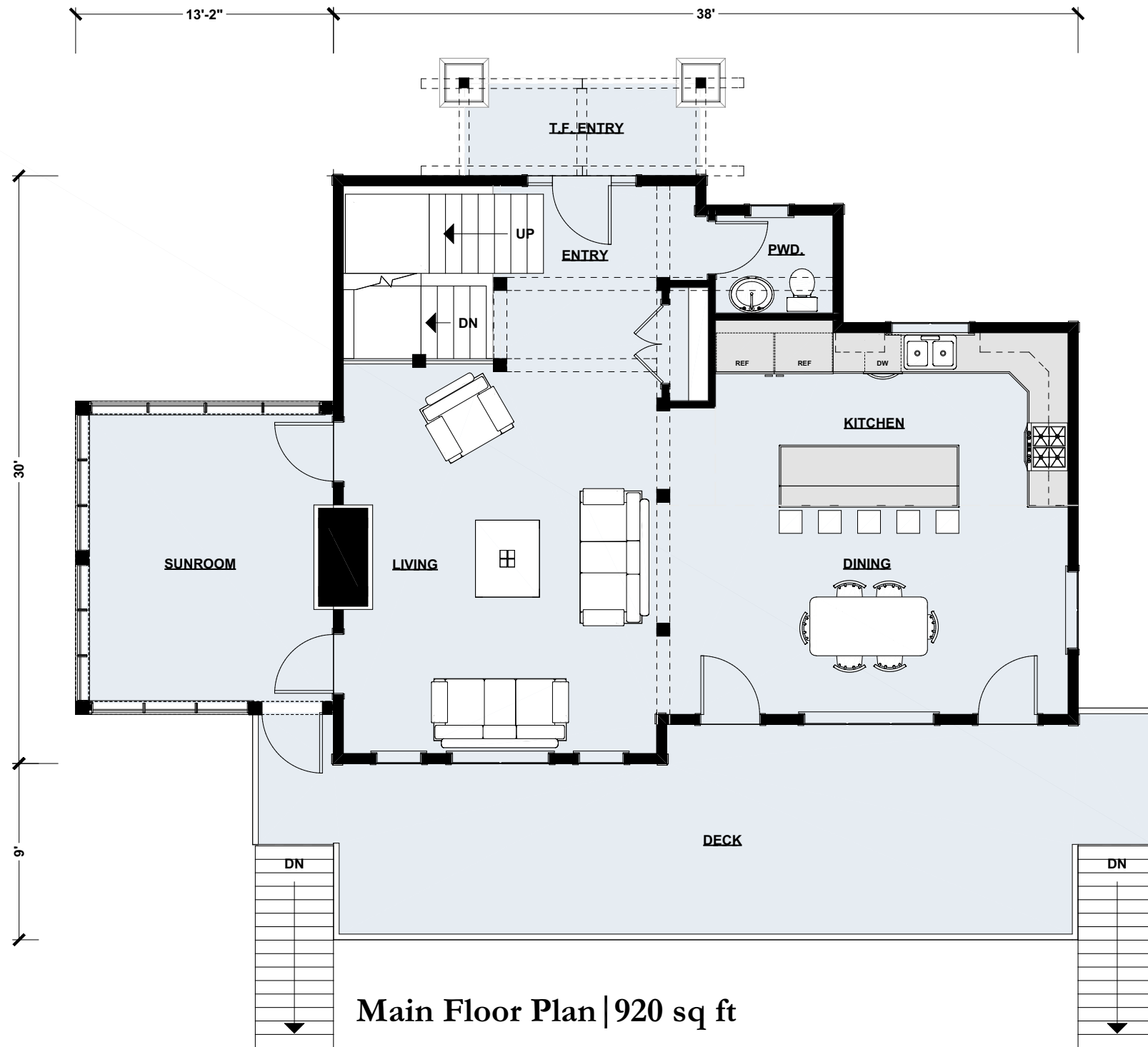






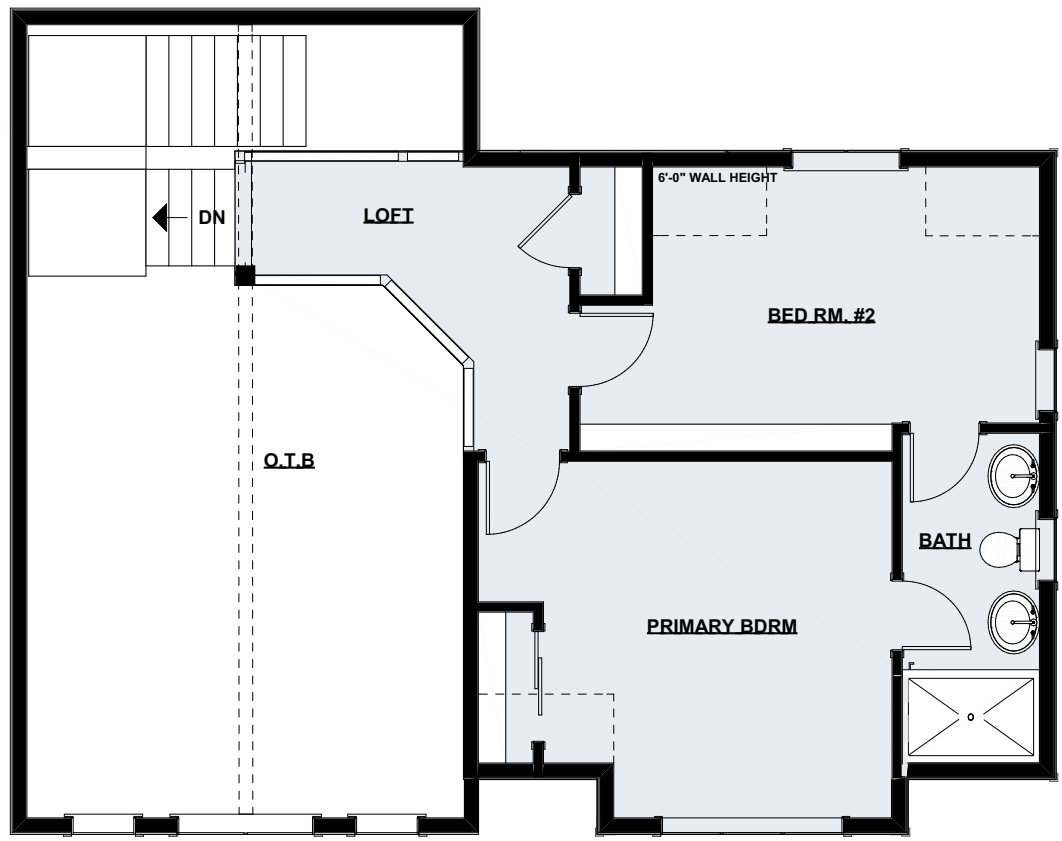


CONFESSION  
LOG & TIMBER  
LIFE



Main Floor Plan | 920 sq ft





Upper Floor Plan | 560 sq ft





Lower Floor Plan | 1,268 sq ft



LIKE THIS PLAN?

# Try Our All-In Log Home Budget Calculator

Most calculators only estimate the shell. Ours gives you a realistic look at the total cost — land, design choices, building options, and more — so you can plan with confidence.

**START NOW**

**Got questions? Call or email:**

877-462-5647 | [info@confederationloghomes.com](mailto:info@confederationloghomes.com)

(We'll send your estimate to this email address)

---

(If you already own property and don't consider it part of your budget, enter 0)

(Builder erects shell and gets it weather tight, YOU act as general contractor - saves 15%.) This adds the look and feel of timber frame to your log home.

(Based on the sq ft of your main floor)