

MILLBROOK- 1090 sq.ft



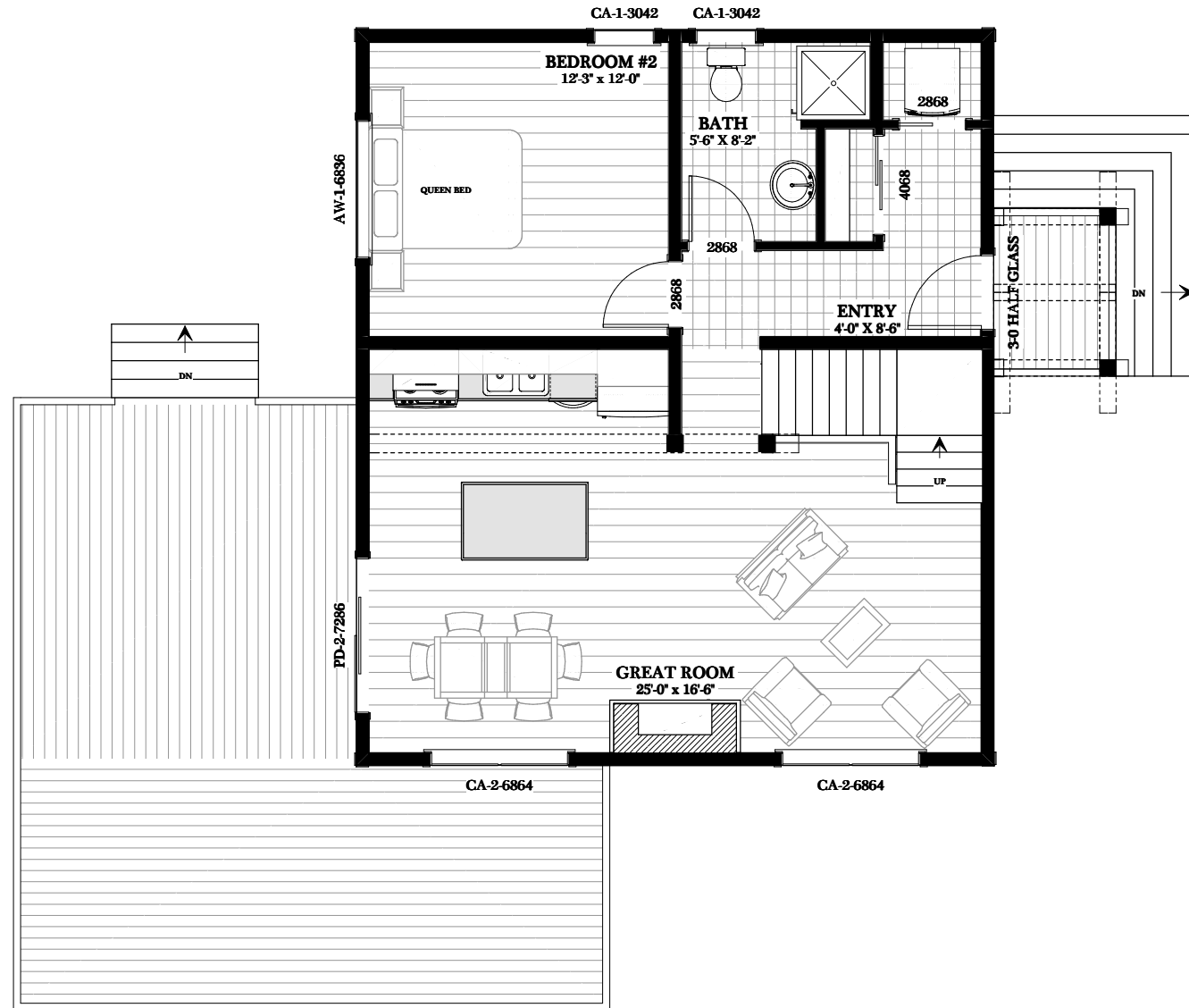
MILLBROOK- 1090 sq.ft



MILLBROOK- 1090 sq.ft



MILLBROOK- 1090 sq.ft

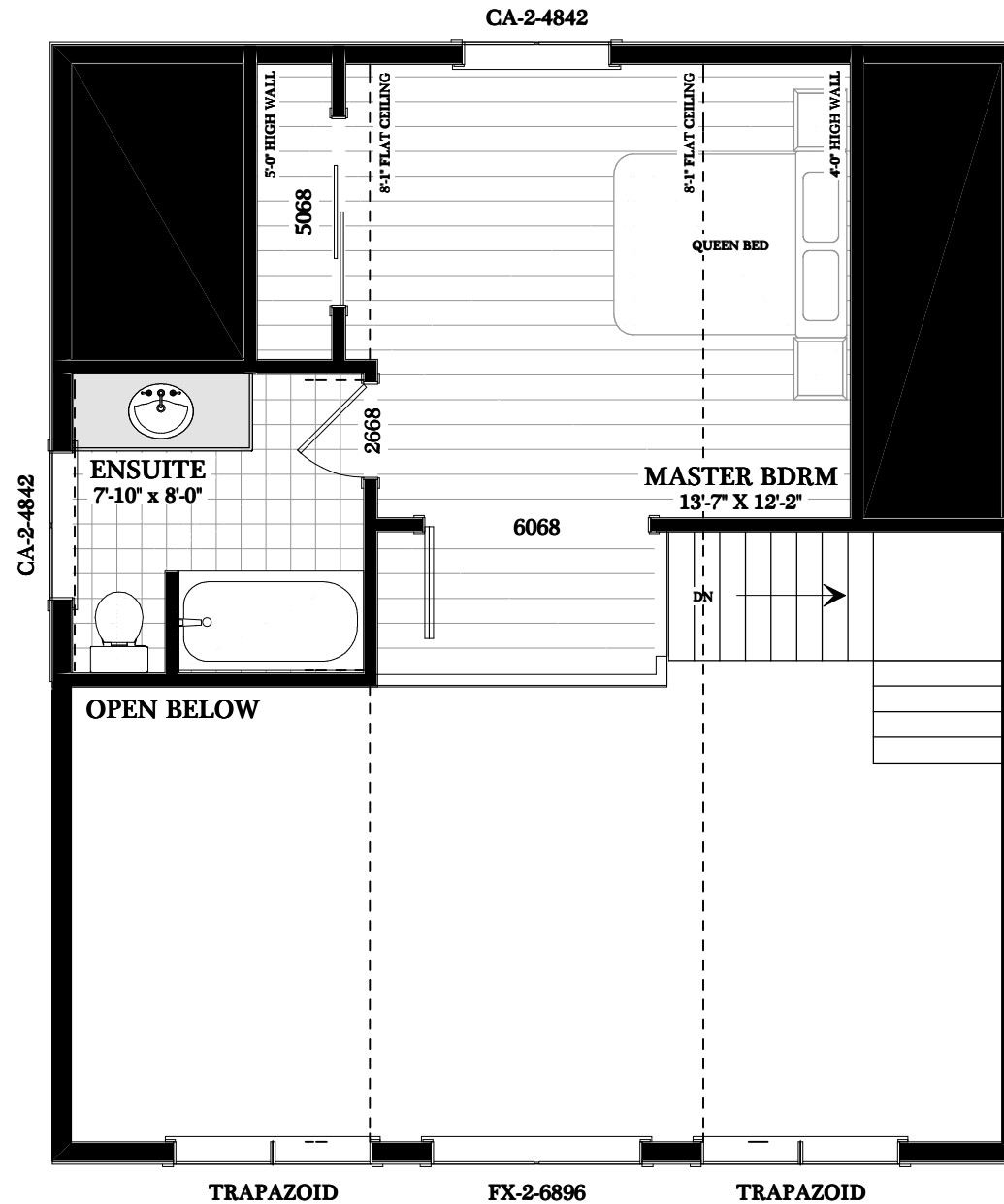


MAIN FLOOR PLAN
780 SQ.FT

MILLBROOK- 1090 sq.ft



Phone: 877-GO-2-LOGS (toll free)
Phone: 705-738-5131
Fax: 705-738-5283
info@confederationloghomes.com
www.confederationloghomes.com



UPPER FLOOR PLAN
310 SQ.FT

MILLBROOK- 1090 sq.ft



Phone: 877-GO-2-LOGS (toll free)
Phone: 705-738-5131
Fax: 705-738-5283
info@confederationloghomes.com
www.confederationloghomes.com

LIKE THIS PLAN?

Try Our All-In Log Home Budget Calculator

Most calculators only estimate the shell. Ours gives you a realistic look at the total cost — land, design choices, building options, and more — so you can plan with confidence.

START NOW

Got questions? Call or email:

877-462-5647 | info@confederationloghomes.com

Email Address

(We'll send your estimate to this email address)

Cost of Property:

(If you already own property and don't consider it part of your budget, enter 0)

Main Floor Size (sq ft):

Second Floor Size (sq ft):

Will you be the GC?:

No

(Builder erects shell and gets it weather tight, YOU act as general contractor - saves 15%.)

Timberframe Accents:

No

This adds the look and feel of timber frame to your log home.

Sunroom Option:

No

Basement Finishing:

None

(Based on the sq ft of your main floor)

Select Currency:

CAD (Canadian Dollars)